

FEBS 17025

Corrigendum to: **Occurrence and postmortem generation of anandamide and other long-chain *N*-acylethanolamines in mammalian brain** (FEBS 16265)

[FEBS Lett. 375 (1995) 117–120]*

Patricia C. Schmid, Randy J. Krebsbach, Stephen R. Perry, Timothy M. Dettmer, Jeffrey L. Maasson, Harald H.O. Schmid

The Hormel Institute, University of Minnesota, 801 16th Avenue NE, Austin, MN 55912, USA

An error was made in calculating the final concentrations of the internal standard mixture. 10 µg of each compound, rather than 100 µg, was added to the extracts. This led to quantitative results that are too high by a factor of 10.

The correct data appear in revised Table 1, Table 2 and Fig. 1, printed below.

In the Abstract:

‘about 2.7 µg/g’ should have read ‘about 0.27 µg/g’

‘to 6.5 µg/g’ should have read ‘to 0.65 µg/g’

In the Materials and methods, section 2.3:

‘A mixture of *N*-acyl[²H₄]ethanolamines (100 µg each) ...’ should have read

‘A mixture of *N*-acyl[²H₄]ethanolamines (10 µg each) ...’

Table 1
Amounts and composition of endogenous NAEs from the brains of pig, sheep and cow

	Pig ^a		Sheep ^b		Cow ^b	
	ng/g wet weight	%	ng/g wet weight	%	ng/g wet weight	%
16:0 NAE	205 ± 49	31.7	74, 76	28.2	111, 102	35.3
18:0 NAE	227 ± 43	35.1	87, 93	33.8	97, 86	30.2
18:1n-9 NAE	96 ± 17	14.8	27, 29	10.6	38, 32	11.5
18:1n-7 NAE	113 ± 14	17.5	74, 72	27.5	78, 55	21.9
20:4n-6 NAE	6 ± 1	0.9	0, 0		4, 3	1.1
Total NAE	647 ± 114		263, 270		327, 277	

Brains were homogenized in chloroform in the presence of deuterated standards and NAEs were isolated and analyzed as described under section 2.

^aMean ± S.D. from extracts of 5 brains, 3 fresh and 2 frozen.

^bAnalyses of 2 separate portions of 1 frozen brain.

Table 2
Amounts and composition of endogenous NAEs from portions of brains frozen, thawed and kept at ambient temperature for 22 h

	Pig ^a		Sheep ^b		Cow ^b	
	µg/g wet weight	%	µg/g wet weight	%	µg/g wet weight	%
16:0 NAE	8.23	33.9	4.12	46.2	8.18	37.9
18:0 NAE	9.11	37.6	2.91	32.6	8.54	39.5
18:1n-9 NAE	4.08	16.8	0.96	10.7	3.06	14.2
18:1n-7 NAE	2.30	9.5	0.59	6.6	1.62	7.5
20:4n-6 NAE	0.55	2.3	0.35	3.9	0.21	1.0
Total NAE	24.26		8.93		21.61	

Extraction and assay as in Table 1.

^aAverages from 2 brains analyzed separately.

^bAverages of duplicate analyses from 1 brain.

^cSmall amounts of 18:2n-6 NAE were present in some extracts (tentatively identified without an internal standard).

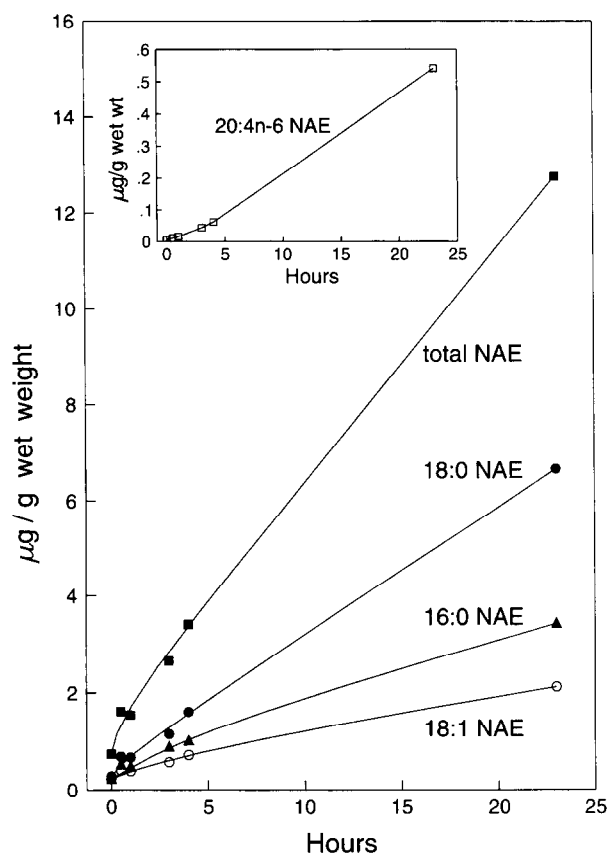


Fig. 1

The authors regret any inconvenience this may have caused.